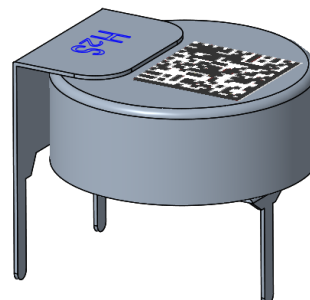


Brief Introduction

FC0-H₂S-5000 H₂S Sensor from ProSense works on the proven fuel cell technology and responds directly to the volume concentration of H₂S. FC0-H₂S-5000 realizes the detection of H₂S by the reaction occurred on the working electrode of the micro fuel cell, during which the current generated is proportional to the concentration of H₂S. FC0-H₂S-5000 is perfect for application powered by battery because fuel cell realizes gas detection without power consumption.



Feature

- *0 power consumption
- *High precision
- *Wide temperature range
- *Long service life
- *Wide linear range
- *Fast response
- *Excellent repeatability and stability

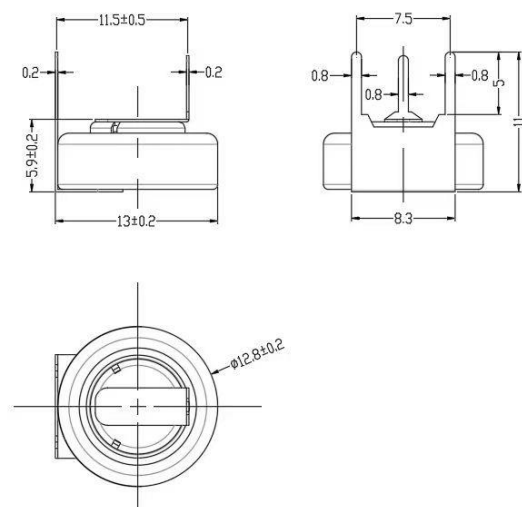
Application

Energy
Electric Power
Petrochemical
Environmental protection
Mining
Agriculture
Smart home
.....

Technical Specification

Item	Technical Specification
Principle	Micro Fuel Cell
Range	0-5000ppm
Max Overload	6000ppm
Sensitivity	0.6±0.2(nA/ppm)
Response Time(T90)	<90Sec
Detection Limit (20°C)	20ppm
Accuracy	±50ppm or ±10% whichever is greater
Repeatability	3%
Linearity	linear
Temperature	-40°C~70°C
Pressure	1atm±10%
Humidity	10%—90%(non condensing)
Lifetime	2 years in air
Warranty Period	12 months
Weight	3g

Dimensions



Notes: All dimensions in mm

Precautions

- 1 .The sensor should be prevented from organic solvents or corrosive gases
- 2 .The sensor should not be stored in dusty, dirty areas and anaerobic environment
- 3 .The sensor must not be exposed to very high concentration of the analyte permanently
- 4 .Excessive shock or vibration should be prevented to avoid internal damage



ProSense Technologies Co., Ltd.

Add: Building4, Lianjian S&T Park, LonghuaDistrict,Shenzhen,China;

Tel: +86 755 3669 0079

Website: <http://www.szprosense.com>

Email: sales@szprosense.com

Mobil: +8613510916915