

Brief Introduction

The electrolyte sensor with the model of FC-DJY-100 from ProSense works on the proven fuel cell technology and responds directly to the volume concentration of electrolyte. FC-DJY-100 realizes the detection of electrolyte by the reaction occurred on the working electrode of the micro fuel cell, during which the current generated is proportional to the concentration of electrolyte. FC-DJY-100 has the typical advantages of high stability and long service life.



Feature

- *0 power consumption
- *High precision
- *High sensitivity
- *High performance/cost ratio
- *Wide linear range
- *Fast response
- *Excellent repeatability and stability

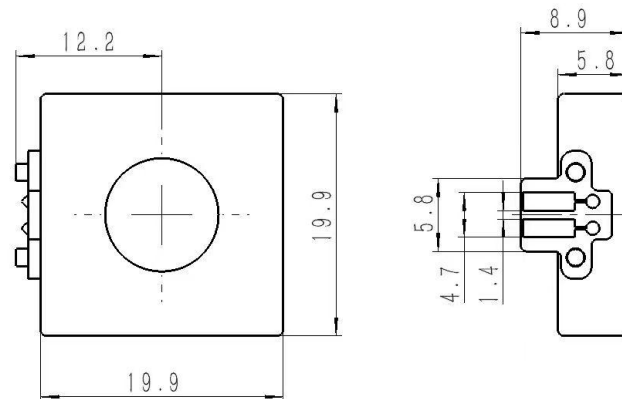
Application

- Factory for Li Battery
- Charging Station for Li Battery
- Warehouse for Li Battery
- Energy Storage System
- Electrical Vehicle
- Computer Room
-

Technical Specification

Item	Technical Specification
Principle	Micro Fuel Cell
Range	0-100ppm
Max Overload	500ppm
Sensitivity	100±50(nA/ppm)(LiPF ₆)
Response Time(T90)	<150Sec
Baseline (20°C)	±5ppm
Repeatability	2%
Linearity	linear
Temperature	-40°C~60°C
Pressure	1atm±10%
Humidity	10%—90%
Lifetime	3 years in air
Warranty Period	12 months
Weight	3g

Dimensions



Notes: 1 All dimensions in mm

2 All tolerances $\pm 0.15\text{mm}$ unless otherwise stated

Precautions

- 1 .The sensor should be prevented from organic solvents or corrosive gases,especially alkaline gases.
- 2 .The sensor should not be stored in dusty, dirty areas and anaerobic environment
3. The sensor must not be exposed to very high concentration of the analyte permanently
- 4 .Excessive shock or vibration should be prevented to avoid internal damage
4. Disassemble of the sensor will result in warranty free.

普 | 晟 | ProSense Technologies Co., Ltd.
PROSENSE

Add:First floor, Building4, Lianjian S&T Park, LonghuaDistrict, Shenzhen, China;

Tel: +86 755 3669 0079

Website:<http://www.szprosense.com>

Email: sales@szprosense.com