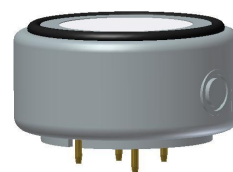


## Brief Introduction

FC-NH3-10 Ammonia sensor from works on the proven fuel cell technology and responds directly to the volume concentration of NH<sub>3</sub>. FC-NH3-10 realizes the detection of NH<sub>3</sub> by the reaction occurred on the working electrode of the micro fuel cell, during which the current generated is proportional to the concentration of NH<sub>3</sub>. FC-NH3-10 is perfect for application powered by battery because fuel cell realizes gas detection without power consumption.



## Feature

- \*0 power consumption
- \*High precision
- \*High sensitivity
- \*Long service life
- \*Wide linear range
- \*Fast response
- \*Excellent repeatability and stability

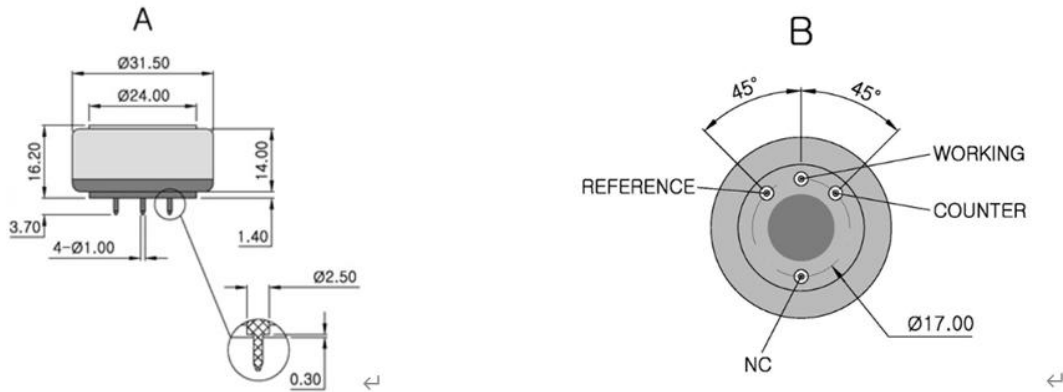
## Application

- Smart Toilets
- Portable devices
- Wearable devices
- Aquatic farm
- Green building
- Smart home
- .....

## Technical Specification

Item	Technical Specification
Principle	Micro Fuel Cell
Range	0-10ppm
Max Overload	50ppm
Sensitivity	6±2(nA/ppm)
Response Time(T90)	<120Sec
Detection limit (20°C)	0.01ppm
Repeatability	3%
Linearity	linear
Temperature	-40°C~70°C
Pressure	1atm±10%
Humidity	15%—90%
Lifetime	3 years
Warranty Period	12 months
Weight	10g

## Dimensions



- Notes: 1 All dimensions in mm  
2 All tolerances  $\pm 0.15\text{mm}$  unless otherwise stated

## Precautions

- 1 .The sensor should be prevented from organic solvents or corrosive gases
- 2 .The sensor should not be stored in dusty, dirty areas and anaerobic environment
- 3 .The sensor must not be exposed to very high concentration of the analyte permanently
- 4 .Excessive shock or vibration should be prevented to avoid internal damage

普 | 晟 | ProSense Technologies Co., Ltd.  
PROSENSE

Add: Building4, Lianjian S&T Park, LonghuaDistrict,Shenzhen,China;

Tel: +86 755 3669 0079

Website: <http://www.szprosense.com>

Email: [sales@szprosense.com](mailto:sales@szprosense.com)